



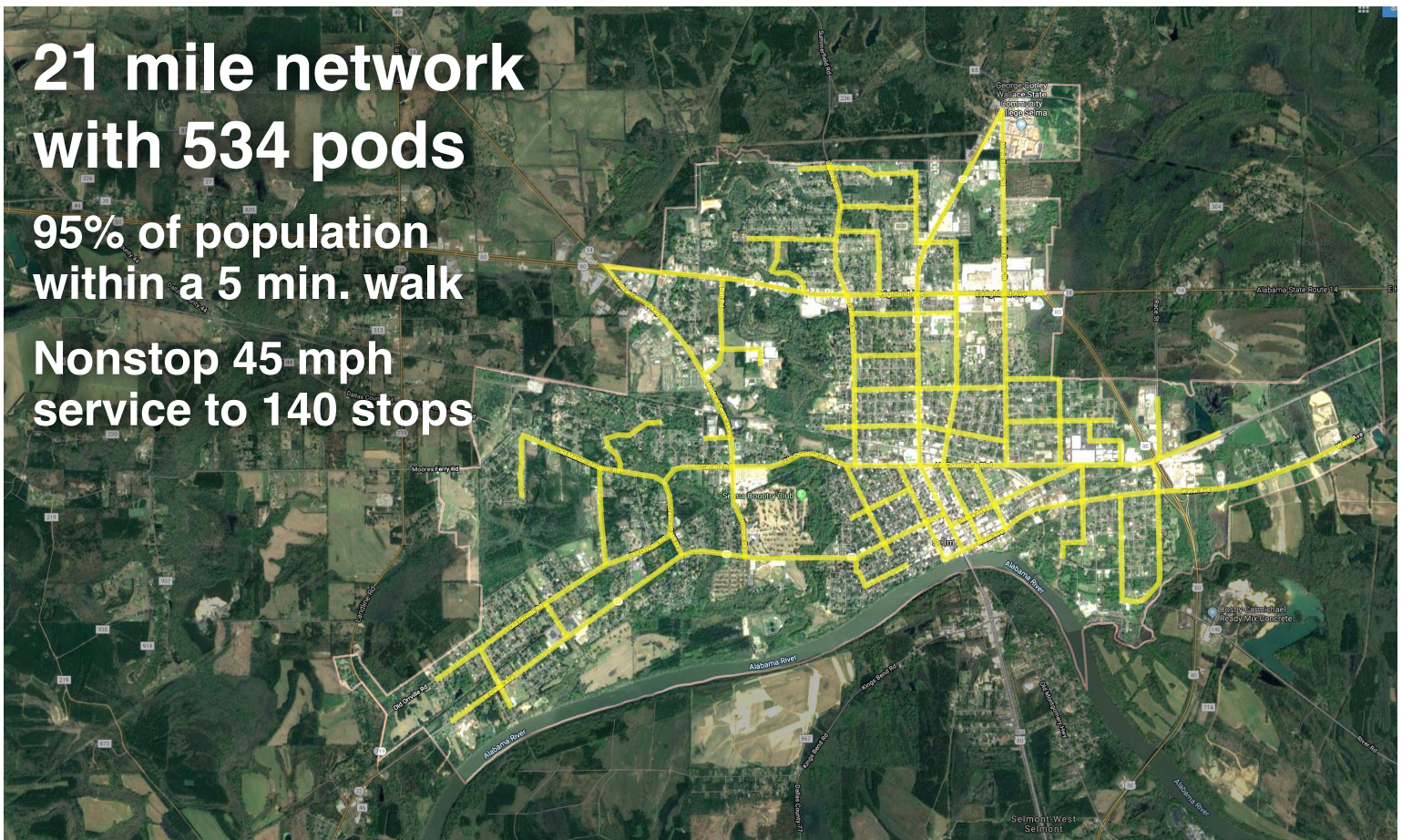
Transit X presents a preliminary proposal for a privately-financed public transit system — a fleet of automated electric vehicles (pods) for passengers and freight on a local and inter-city micro-guideway providing equitable transportation for

Selma, AL

This proposal is downloadable at transitx.com/proposals/Transit_X_for_Selma,AL.pdf

**High capacity • High speed • Nonstop • 24/7
Solar powered • Zero Wait • Door-to-door • Resilient**

A companion Transit X Handbook is available at transitx.com/transitxhandbook.pdf



Transit X proposes to finance, build and operate a sustainable micro-guideway to carry passengers and freight for Selma that makes the Transit X service convenient to 95% of the population.

Transit X efficiently services both suburbs and cities and provides for a higher quality of life. See transitx.com for more details. This 3-minute video (transitx.com/video) describes our innovative solution.

Major benefits

- Reduce congestion
- Provide parking relief
- Reduce pollution
- Improve safety

The Transit X Handbook (transitx.com/transitxhandbook.pdf) answers many questions about our service, the company, our technology, and the way we address: congestion, parking, road safety, pedestrian safety, ADA compliance, sustainability, fares, solar+storage, construction, aesthetics, operations, economic development, quality of service, security, station footprint, equitability, carbon footprint, transit integration, resiliency, reliability, rights-of-way, and open space.



Congestion, parking, pollution, and safety

Most regions suffer from traffic congestion, limited parking, air pollution, and unsafe roads. Potential solutions are costly, but Transit X can solve these challenges without public funding. Transit X can integrate into the built environment, providing both short term relief and a long term solution.

High Capacity & High Speed

A single track carries 12,000 pods per hour (20,000 to 50,000 passengers per hour). Two boarding areas fit in a single car space and provide 2,000 boardings per hour. For urban commutes, pods trips are 3 times faster than car trips and the high-speed podway provides faster door-to-door trips than air travel for distances of 1,000 miles or less.

Zero Footprint and Minimal Disruption

Transit X features stops that don't interfere with pedestrians or other forms of transportation. We use easements alongside highway and roads and integrate utility lines and poles. Non-stop interchanges fit above existing intersections. Factory-built tracks and posts enable fast installation with minimal disruption. There are options for long crossings using bridges or underground tunnels. Posts are typically spaced at 23 m (25 yds).

Low-cost Infrastructure & equitable fares

Transit X does not require government funding because our revenue from fares, freight, and advertising is greater than our costs. We have reduced or eliminated many costs of transportation including the cost of materials, land, construction, fuel, debt service, and labor. Our projects are typically financed by investment banks, private equity firms, banks, and governments.

Proven technology

Our team and partners have built fully automated systems that are now in operation around the world. Transit X may look unique, but the underlying design is very similar to systems that have been operating for 40 years with an exemplary safety record. The rollout and maiden flight occurred on Oct 29, 2018 in Leominster, Massachusetts. The first Transit X system will be demonstrated by the end of 2019.

Service Quality

Transit X provides on-demand, last-mile service that is superior to cars or buses. An operating agreement will guarantee high levels of availability and reliability. Our use of small vehicles (pods) makes this possible. By reducing car use, Transit X creates walkable and bike-friendly neighborhoods.

Less pollution: Air, Sound, Light, Visual, Water

Transit X offers a much higher quality of life by eliminating many forms of pollution. Pods are quiet, efficient and have zero emissions. Pods offer less visual impact than the existing roads and vehicles, and utility lines can be hidden within the track. At night, there is no light pollution from headlights or taillights. Water pollution from road runoff is significantly reduced. Parking lots and roadways can be converted into green space and community paths as they become unnecessary.

Sustainable and Efficient

Pods weigh only 55 kg (121 lbs) and achieve over 20 times the efficiency of electric cars. Solar, wind, and storage installed on our tracks and posts can provide 100% of the clean energy needed to power the system.

More Transit & Fewer Cars

Transit X provides the convenience and privacy that people value in cars, yet without the negative impacts of personal cars. Transit X combines the best of mass transit and personal transportation modes which will lead to greater use of public transit and fewer cars.

De-risking Projects

Transit X partners with large, established firms to provide fixed-price contracts for the engineering, certification, construction, and operations of a Transit X system. These partnerships enable Transit X to de-risk all of the major elements of the project, and provide performance guarantees. We work with local construction firms.

Jobs and Workforce Development

Many regional jobs will be created to build a new transportation infrastructure, as well many new types of jobs will be created from economic growth. The majority of

the construction jobs will be locally sourced and preferential hiring is given to those displaced by the transition.

Revenue Generator for Government

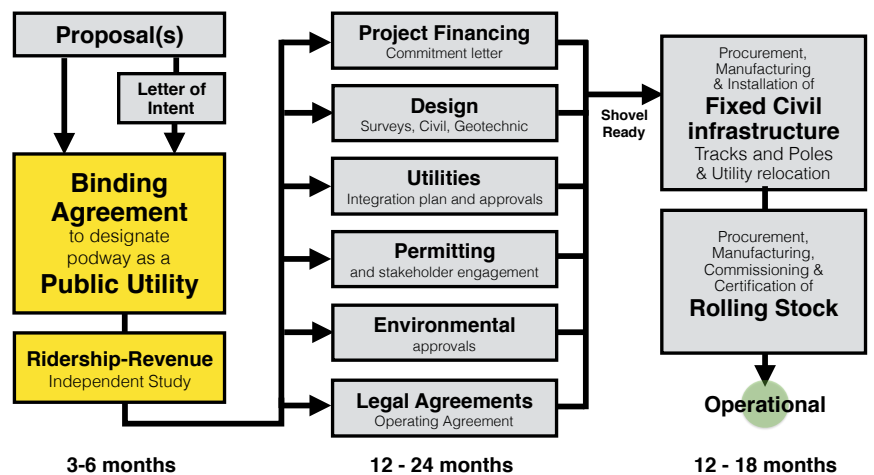
Not only does Transit X not require public financing, but the government and private easement owners receive 4-5% of gross revenue, which would be US\$3 million per year average over the first 10 years.

Short and Long Term Solution

A project could be operational within 24 months from the start of a project. Transit X offers a rapidly-deployable solution that provides long term benefits. We would form a local company to build, operate, and maintain the network. At least 75% of the profits would be invested back into the region.

Moving Forward

The diagram shows our process for a project. We submit a project proposal, then ask for a commitment for Transit X to build and operate a podway along rights-of-way easements. Example documents and a sample project schedule can be viewed at: transitx.com/process



Evaluation

Please review our preliminary proposal, and then ask us any questions. We would be happy to provide further information, address specific concerns, or meet with specific people or groups. Any routes or coverage areas shown on the map are only preliminary suggestions and actual routes would be determined based on needs, rights-of-ways, utility corridors, location of trees, and many other factors.

We expect this proposal to be reviewed by one or more committees or working groups. Familiar transportation options, such as buses, light rail, subways, and ride-sharing services (including autonomous vehicles) may have already been considered. Very few options offer the convenience of cars with at least the capacity of buses, and most, if not all, require public funding and subsidies.

Private cars have a dominant mode share because people like the privacy and convenience of a car — despite the significant risks and negative impact associated with them. People won't give up their cars unless the alternative is both better and cheaper. That is what Transit X can provide.

We hope you agree that this proposal offers a way to address your challenges in both the short and long term, providing an option that is better and lower risk than any alternative — including continuing with the status quo.

We hope you will conclude that moving forward with Transit X is an excellent opportunity to meet your current and future challenges.

Once we agree to move forward, we look to receive a commitment for Transit X to build and operate a podway along rights-of-way easements.

Other Resources

The links below provide general information about Transit X:

- One minute video overview (transitx.com/video)
- 7 minute video presentation (<https://vimeo.com/366066646/eac953c0cc>)
- Transit X Handbook (transitx.com/transitxhandbook.pdf)
- Company profile (transitx.com/about.pdf)
- Other proposals (transitx.com/proposals)
- The process and templates for agreements (transitx.com/process)

Addendum

The remaining pages of this proposal provide project-specific details:

- Project Overview and Impact — *pages 6 and 7*
- Taxes and Fees — *pages 8 and 9*
- Fares — *page 10 and 11*
- Financial Project Summary with Pro Forma — *pages 12 and 13*

We look forward to working with you to improve the quality of life for Selma through better transportation.

Sincerely,



Email: hello@transitx.com

Telephone: +1 508-596-7024 (WhatsApp connected)

Zoom e-room: <https://zoom.us/j/8229009123>

Website: transitx.com

Twitter: <http://twitter.com/TransitXCorp>

Mail: 1127 Commonwealth Ave #30, Boston, MA 02134 USA





1	Transit X network length	34 km	20.8 miles
2	People (resident-equivalent) in region	17,886	resident-equivalent population
3	Route density ratio (route length to service area)	1.16	
4	Number of stops	140	
5	Triple-speed route length	0 km	
6	Water crossing route length	0 km	
7	Cost of fixed infrastructure	\$121,511,902	
8	...per person	\$6,794	
9	Mode share of travel on Transit X (27% after first year)	81%	after 10 years
10	Distance traveled by passengers on Transit X, per year	122,765,033 km	76,251,573 miles
11	...per day	336,343 km	208,908 miles
12	Daily potential energy generation with standard panels on tracks	257.3 MWh	
13	Sustainable energy use per day	2.3 MWh	1.0% of max capacity
14	Energy storage capital cost for 1 day(s) of supply at \$250 per kWh	\$570,120	
15	Size (rated power) of solar installation	530 KW	
16	Cost to generate sustainable energy (at \$1,000 per kW)	\$530,176	
17	Cost of buying sustainable energy at \$0.15 per kWh	\$342	per day 2% of OPEX
18	Daily passengers riding Transit X	14,443	customers 81% of the pop.
19	Distance per passenger per day	23 km	14.5 miles
20	Average distance per trip (assuming 3 trips per day)	8 km	4.8 miles
21	Single passenger fare for shared 8 km trip	\$1.90	
22	Passenger distance traveled during peak hour	67,269 km	41,782 miles
23	Breakeven	7,305	customers per day (51% of expected and 43% of people convenient to Transit X)
24	Boarding capacity	50,400	passengers per hour (349% of customers)
25	Number of pods for peak demand	534	pods at 81% mode share
26	Number of customers per pod	27.0	and 33 people per pod
27	Distance per pod per year	168,346 km	
28	Two-layer pod garage area (3% of route with side-parking)	587 m ²	0.2% of car parking
29	Cost of pods	\$3,471,000	is \$149 per person
30	Capital cost of energy generation and storage	\$1,430,385	is \$80 per person
31	Project Finances		
32	Total Project Cost	\$126,413,287	
33	Project cost per km	\$3,773,301	per km US\$6.1M per mi.
34	Equity financing	\$37,923,986	
35	Debt financing	\$88,489,301	
36			
37			
38			
39	Debt service (per year)	\$15,043,181	
40	Yearly fees and taxes (US\$218 per capita)	\$3,902,893	
41	OPEX + Debt service + Tax + Fees	\$25,266,738	
42			
43			
44	Project costs — per person	\$7,068	
45	Number of motor vehicles displaced	12,277	motor vehicles
46	Yearly cost of cars displaced — per person	\$6,177	
47	Operating costs per passenger-km	\$0.05	
47	Full costs per passenger-km	\$0.21	
48	Breakeven revenue distance per day	170,126 km	105,668 miles
49	Number of tracks in one direction needed to satisfy peak demand	0.00	



Impact of proposed network

1	Reduction in GHG emissions (metric tons CO2-eq)	12,123 MTCO2-eq annually
2	Estimated cost to maintain public roadways	\$11,637,551 annually
3	Reduced waste products	1,967 metric tons annually
4	Travel time saved (non-stop travel and congestion)	413 hrs/person annually
5	Cost savings from reduced car ownership	\$1,811 per person annually
6	Increase in household income (from time savings and car costs)	14%
7	Reported injuries avoided	76 annually
8	Lives saved (from safety)	1 annually
9	Land freed from parking (70 acres)	282,360 m ²
12	Temperature reduction (from heat island effect & GHG reductions)	0.5 to 2 °C
11	Health care savings (from pollution, injuries)	High

Model Inputs

15	Ratio of road length to track length	4
16	Walking speed	4.9 km/h 3 mph
17	Width of convenient swath along track	0.82 km 1 mile
18	Fixed cost per km (track & posts)	\$2,790,000
19	Water crossing: additional cost per km	\$8,370,000
20	Triple-speed: additional cost per km	\$5,580,000
21	Rate factor for water crossings or high-speed links.	2.2
22	Average distance traveled per person per year in a developed county for trips under 1600 km)	10,000 km 6,211 miles
23	Average distance per day per person	27 km
24	Mode share % of people convenient to Transit X	85% at 5 min walk.
25	Percentage of daily demand during peak hour	20%
26	Maximum capacity per track	23,598 pph
27	Average dwell time during peak hour	10 seconds
28	% of pods traveling on route with highest demand	18%
29	Average speed of pod	72 km/h 45 mph
30	Average # of trips for a daily customer	3 per day
31	Average passengers per pod during peak hours	2.2 passengers
32	Average passengers per pod	1.4 passengers
	Average discount per passenger	18%
	Maximum passengers per pod	5 passengers
33	Empty pods: Percentage non-revenue	25%
34	Ex-Factory cost per pod	\$5,000
35	Worldwide Median Income per Household (US\$)	10,000
36	Average number of residents per household	2.3
37	Base fare per km (per mile)	\$0.41 \$0.66
38	O&M as % of project cost	5%
39	Percentage debt financed	70%
40	Length of loan/debt	10 years
41	Interest rate for debt	7%
42	kg CO2 emissions per liter of gasoline	2.37
43	Monetary value of 1 hour personal time (USD)	\$13.75
44	Est. roadway maintenance per year per km	\$100,000
45	Area of one parking lot space	23 m ² 247 sf
46	Commercial income of land (annual)	\$1.10 per m ²
47	Distance from roadway that is convenient	0.25 km
48	Stops per km	4.0
49	Boarding capacity per stop	360 pph
50	Solar panel area per meter of track	2.0
51	Cost of sustainable energy and storage	\$0.15 per kWh
52	Global Horizontal Irradiance (GHI)	3.8 kWh/m ² /day
53	Cost to generate sustainable energy	\$1,000 per kW
54	Storage per column	40 kWh
55	Typical span	23 m cols/km: 44
56	Energy storage cost	\$250 per kWh
57	Energy storage capacity	1 days
58	Area of parked pod	2.20 m ²
59	Distance discount at max distance	40%
60	Max distance discount	500 km
61	Max usage discount at 10,000 km per capita	50%
62	Shared Pod Discount	20%
63	Shared Pod Compartment Discount	40%
64	Mode share starting discount	67%

Model Inputs (continued)

68	Name of region or project	Selma, AL
69	Currency name	
70	Equal to US\$1	1
71	Sustainable energy/electricity generation & storage as	CAPEX
72	Land area of region (sq. km)	36
73	Number of residents in region	17,886
74	% travel within region	85%
75	% of land area served by roads	80%
76	Coverage: % of pop. convenient (5 min walk) to Transit X	95%
77	Annual median household income (US\$)	\$55,000
78	Convenient walk time to stop (min)	5
79	Triple-speed route length (km)	0
80	Water crossing route length (km)	0.0
81	Visitors per year	0
82	Average length of visit (days)	2
83	Solar production ratio	1.57
84	Regional Fare Factor	1.0
85	EPC costs & contingency	30%
86	Triple-speed (km/h)	242
87	Daily Passengers Adjustment	100%
88	Number of Stops Adjustment	100%
89	Mode Share Adjustment	100%

Pod & Car

		Pod	Car
90	Service life (years)	20	12
91	Full cost of vehicle per year	\$200	\$9,000
92	Public cost to maintain infrastructure per year per km	\$0	\$100,000
93	Energy consumption (MPGe)	3564	24
94	Energy consumption (liters/100km)	0.07	9.8
95	Energy consumption (Watt-hours/km)	9	1375
96	mass of CO2 per vehicle per km (kg)	0	0.09875
97	Vehicle mass (kg)	45	1950
98	Average speed of urban travel (km/h)	72	16
99	Typical travel time (in minutes) for 8 km trip	6	29
100	Fare/cost per km	\$0.41	\$0.62
101	Number of deaths per 100M passenger-km	0.00001	1
102	Number of injuries per 100M passenger-km	0.0006	62
103	Volume to park (cubic meters)	5.7	70.9



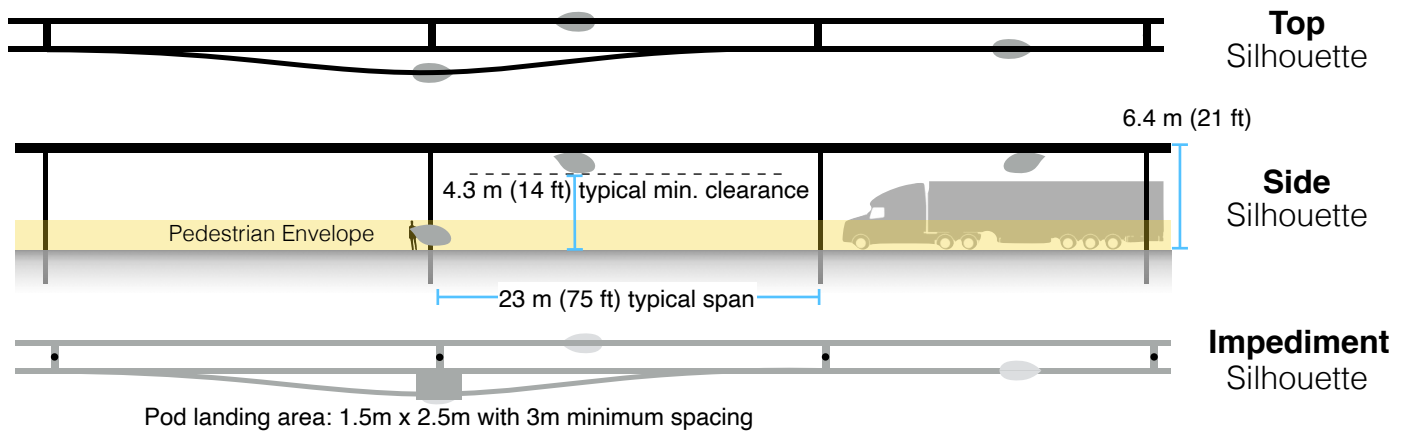
5% of gross revenue is paid for air rights and local taxes.

A minimum payment is based on the Footprint and the Transit X Commercial Rate (TXCR).

1	Air-rights and Local Taxes	(for calculating minimums)	
2	Total commercial land (estimated)	2,880,000 m ²	712 acres
3	Total commercial gov't revenue (US\$)	\$3,168,000	
4	TXCR (Transit X Commercial Rate)	\$1.10 per m ² (estimated)	
5	<i>TXCR is the yearly tax rate per land area. Calculation: total land area of commercial properties in the governmental region, divided by all the governmental income generated by those properties. The TXCR is used to calculate the minimum tax/fee.</i>	\$11.84 per sf (estimated)	
6			
7	Private Easement Fees	For example	
8	4% of gross revenue	\$23.30 per route-meter	\$7.11 per route-foot
9	Minimum per year	\$1.63 per route-meter	\$0.50 per route-foot
10	Transit X payment to Government		
11	% of route on government easements	98% estimated	
12	Total air-rights and local taxes	\$3,840,447 per year	
13	per resident	\$215	
14	with a minimum of	\$54,770 per year	
15			
16	Other financial benefits to Government		
17	Less road maintenance from lower VMT		
18	Public land made available from less parking and lanes		
19	Reduced emergency and police services for road-related incidents		
20	Less investment needed in road-based infrastructure (charging stations, signals, BRT, etc)		

Footprint calculations for minimum fee

Yearly fees and taxes



1	Footprint Calculations	Metric	Imperial
2	Track width	0.30 m	11.8 inches
3	Track height	0.60 m	23.6 inches
4	Post diameter	0.3 m	11.8 inches
5	Post cross section	0.07 m ²	0.8 sf
6	Stop landing area	3.75 m ²	40.4 sf
7	...width	1.5 m	59.1 inches
8	...length	2.5 m	98.4 inches
9	Ramp length	21 m	68.9 feet
10	Typical Span	23 m	75.5 feet
11	Number of posts per unit length	43.5 poles per km	70.0 poles per mile
12	Post height	6 m	19.7 feet
13			
14	Single track	1022.1 m ²	10998 sf
15	...Area of Side Silhouette	678.3 m ²	7298 sf
16	...Area of Top Silhouette	313.1 m ²	3369 sf
17	...Impediment Area (adjusted)	30.7 m ²	331 sf
18			
19	Dual track	1322.1 m ²	14226 sf
20	...Area of Side Silhouette	678.3 m ²	7298 sf
21	...Area of Top Silhouette	613.1 m ²	6597 sf
22	...Impediment Area (adjusted)	30.7 m ²	331 sf
23			
24	Stop	82.1 m ²	883 sf
25	...Area of Side Silhouette	25.2 m ²	271 sf
26	...Area of Top Silhouette	19.4 m ²	208 sf
27	...Impediment Area (adjusted)	37.5 m ²	404 sf
28			
29	Stops with dedicated landing areas	2 stops per km	3.2 stops per mile
30	% of dual track	100%	
31			
32	Average area per unit length	1,486 m ² per route-km	25,793 sf per route-mile
33			
34	Contract values		
35	% gross revenue for government on private prop.	1%	
36	% gross revenue for private easement	4%	
37	% gross revenue for government easement	5%	
38	Impediment Factor	10	



Fair Fare Formula

Summary	<p>Faster travel saves a household 295 hours per year.*</p> <p>At 0.39 USD per mile, a typical commute on Transit X is 17% less than public transit and 74% less than a Taxi.*</p>
---------	---

All prices in USD		Trip Length		
		1 mile	6 mile	25 mile
Transit X		0.49 to 0.81 2 min., 3.6x faster	2.41 to 4.04 8 min., 3.6x faster	9.24 to 15.76 33 min., 3.4x faster
Public transit average		2.73	4.34	6.36
Common public modes	Taxi	3.78 2 to 6 minutes	16.48 8 to 30 minutes	64.09 30 to 120 minutes
	Uber/Lyft	2.88 2 to 6 minutes	11.87 8 to 30 minutes	45.56 30 to 120 minutes
	Public Bus	2.20 3 to 12 minutes	2.20 15 to 60 minutes	3.37 60 to 240 minutes
	Train	3.30 2 to 12 minutes	3.88 8 to 60 minutes	6.08 30 to 240 minutes
Personal car		3.16 2 to 6 minutes	9.93 8 to 30 minutes	35.34 30 to 120 minutes

Travel mode	Avg. Speed	Low Speed	High speed	Base	Includ es km	Over per-km	Min Dist km	Max Dist. km	Time cost per min	Mode share		
	km/h	km/h	km/h							6%	70%	24%
Taxi	30	20	80	2.20	1	1.10	0.5	100	0.98	5%	4%	1%
Uber/Lyft	30	20	80	1.76	1	0.88	0.5	100	0.49	10%	10%	2%
Public Bus	15	10	40	2.20	20	0.06	0.5	50	0	50%	50%	40%
Train	30	10	80	3.30	2	0.07	2	100	0	35%	36%	57%
Transit X	72	72	72	0	0	0.24	0.1	50	0	-	-	-
Personal car	30	20	80	1.46	0	0.73	0.1	400	0.23	-	-	-

* All numbers on mode shares, speeds, and costs are rough estimates..

Base fares are set for first 5 years, then adjusted by formula. A 20% discount on a shared pod and a 40% discount on a shared compartment. Trips are discounted proportional to their length reaching a maximum of a 40% discount on a 500 km trip. No congestion-based pricing. Fares are proportional to the median income of the area and inversely proportional to per capita use, so the more use of Transit X, the lower the base fare up a to 50% discount. The amount of market-rate fares must be less than the amount of discounted fares. Transit X Fair Fare Formula and Fair Freight Formula is universal and applies to all regions and all times.



Fair Fare Formula

Fare rates are updated annually using this formula

	Name	Value	Units	Description of the value or model input
1	GlobalIncome	10,000	USD	Global median household income. Updated annually based on most recent standard published data.
2	AllTravel	23,000	km	Travel distance per household per year on any mode for trips under 1600 km. A global constant
3	PercentIncomeForTransport	20%		% of median household income for all transportation under 1600 km trips. A global constant.
4	GlobalRate	0.09	USD/km	Global rate: GlobalIncome * PercentIncomeForTransport / AllTravel
5	IncomeFirst	\$55,000	USD	Median household income at first stop (per person per day). External input. Based on reliable public data source updated annually.
6	IncomeDest	\$82,500	USD	Median household income at destination per trip. External input. Based on reliable public data updated annually.
7	RegionalRate	0.48	USD/km	Regional rate based on median income: MedianIncomeFirst * PercentIncomeForTransport / AllTravel
8	UnderIncomeRate	0.00	USD/km	Under global income adjustment: if (RegionalRate < GlobalRate, GlobalRate - RegionalRate, 0)
9	NominalRate	0.48	USD/km	Nominal rate: RegionalRate + UnderIncomeRate
10	RegionalFactor	1.00		Regional Fare Factor. Negotiated upfront to make network financially viable.
11	AdjustedRate	0.48	USD/km	Regional adjusted rate: NominalRate * RegionalFactor
13	Population	17,886		Population in region. Updated annually based on trusted public data source.
12	UsageMaxDiscount	50%		Fare Discount when Transit X travel per household equals AllTravel. Global constant.
14	PassengerTravel	122,765,033	km	Total passenger distance traveled previous calendar year. Based on expected mode share for first 3 years. Based on actual passenger trips. Audited.
15	ModeShare	30%		Percent of Total Travel Per Capita on Transit X: PassengerTravel / (Population x AllTravel)
16	BaseRate	0.41	USD/km	Base rate for single-passenger pod (without discounts) (1 - UsageMaxDiscount x min(1, ModeShare)) x AdjustedRate
17	SpecialRateFactor	2.20		Rate factor for water crossings or high-speed links. Global constant.
18	SpecialBaseRate	0.90	USD/km	Base rate for high-speed travel or water crossings: BaseRate * SpecialRateFactor
19	DistanceDiscount	40%		Distance discount at max distance. Global constant.
20	MaxDistanceDiscount	500	km	Max distance discount. Global constant.
21	DistanceDiscountPerKm	0.000326	USD/km	Discount amount per km: BaseRate x DistanceDiscount / MaxDistanceDiscount
22	SeniorDiscount	20%		Senior discount set according to local regulations
23	StudentDiscount	20%		Student discount set according to local regulations
	DisabilityDiscount	20%		Disability discount set according to local regulations
24	DiscountBaseRate	0.33	USD/km	Discounted base rate: BaseRate x (1 - SeniorDiscount)
25	SharedPodDiscount	20%		Discount for requesting a shared pod. 15% minimum and 30% maximum.
26	SharedPodRate	0.33	USD/km	Rate for a shared pod: BaseRate x (1 - SharedPodDiscount)
27	SharedCompartmentDiscount	40%		Discount for requesting a shared compartment. 25% minimum and 40% maximum. At least 10 percentage points higher than SharedPodDiscount.
28	SharedCompartmentRate	0.24	USD/km	Rate for shared compartment BaseRate x (1 - SharedCompartmentDiscount)
29	SingleOccupancyMaxDistance	0.28	USD/km	Rate for 500 km in single-passenger pod.
30	Senior + SharedCompartmentRate	0.12	USD/km	Rate for a Senior taking a 500 km trip in a shared compartment. BaseRate x (1 - SeniorDiscountAmount) x (1 - SharedCompartmentDiscount) x (1 - MaxDistanceDiscount)
31	50PctIncomeAtDest	25%		% Higher fare rate if Destination has 50% higher median income than First (IncomeDest / IncomeFirst - 1) / 2
32	DistanceBase	90,846,124	km	Passenger distance under base fare. Audited value from operational data.
33	PercentBase	74%		Percent of passenger distance under base fare: DistanceBase / PassengerTravel
34	BaseRevenue	30,294,123	USD	Annual revenue from all travel under base rate. Audited value from operational data.
35	AverageDiscount	18%		Average fare discount from Base Rate: 1 - (BaseRevenue / (DistanceBase x BaseRate))
36	MarketFactor	1.0		Market rate factor. Negotiated value for setting ratio of AverageDiscount
37	MarketRateCap	18%		Cap on passenger travel distance at market rate: AverageDiscount x MarketFactor
38	MarketTravelCap	16,394,845	km	Cap on passenger travel distance at market rate: DistanceBase x MarketRateCap

Project Summary

Project Description A fully-automated, solar-powered, micro-guideway network providing a sustainable transportation utility.

Project type Sustainable Transportation Infrastructure
Design, Build, Finance, Own, Operate, Maintain (DBFOOM)

Project equity US\$38 million (30% of total)

Cost to Gov't \$0

Structure Privately financed equity and debt

Debt term 10 years @ 7%

Equity terms A waterfall profit distribution per year with:

1. 90% until capital payback,
2. then 50% until Target% is reached
3. then 10%

Taxes & Fees \$3,840,447 per year

Benefits to society and environment Extremely high

Estimated return 12% average IRR at 5 yrs
23% average IRR at 10 yrs

Financials

(US\$ in millions)	Year 1	Total Years 1-12
Gross Revenues	26	746
Taxes and fees	1	37
Debt service	\$6	\$68

ESG (Environmental, Social, Governance) Benefits

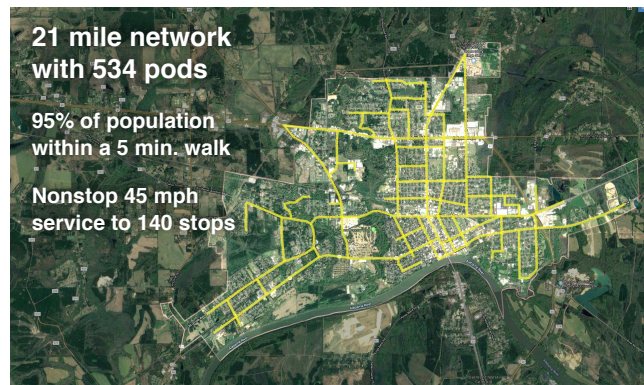
Clean Energy yes	Improve Resiliency yes
Energy security yes	Sustainable yes
Zero Emissions yes	Equitable yes
Zero GHG yes	Recyclable Materials yes
Lowers Pollution yes	Affordable Housing yes
Clean Water yes	Improved Health yes
Improved Safety yes	Economic Development yes
Add Green Space yes	Access to Food yes
Accessible yes	Add Quality Jobs yes



Transit X presents a preliminary proposal for a sustainable micro-guideway network — a fleet of automated electric vehicles (pods) for passengers and freight on a local and regional podway providing equitable public transportation for

Selma, AL

High capacity • High speed • Nonstop • 24/7
Solar powered • Zero Wait • Door-to-door • Resilient



About Transit X

Transit X finances, designs, builds, and operates solar-electric micro-guideway public transit podways to supplant buses, trains, cars, and trucks. Transit X offers its service to governments and commercial developers. Maiden Flight was on Oct 29, 2018 and pilot projects started in 2018. First pilots will break ground in 2019 and begin operations in 2020. Transit X is a privately held company founded in 2015, based in Boston, Massachusetts.

Status

	Now	Prior to close
Project financing	Available	Yes
Outdoor Test Track	Nov 2019	Yes
Rider-Revenue study	Preliminary	Yes
Environmental study	Per region	Yes
Air rights	Per project	Yes
Permitting	Per project	Yes
Safety certification	Per country	Yes
Construction firm	Per project	Yes
Design and major subs	Per project	Yes
Operations & Maint	Partners	Yes
Utility relocation	Per project	Agreements

General information available at transitx.com. Detailed information and references can be provided under appropriate non-disclosure/non-compete/non-circumvent agreements. Contact: Mike Stanley, CEO, Transit X, mike@transitx.com, 508-596-7024



Model Inputs and Assumptions

Route length (km)	34	Travel per year per pod (km)	168,346
Starting number of pods	176	Revenue per vehicle-km (US\$)	0.87
Projected revenue growth	15%	OPEX as % of project cost	5%
Project Cost (Privately funded)	\$126,413,287	Debt Interest rate	7%
% Debt financed	70%	Debt term (yrs)	10
Debt	\$88,489,301	Profit share when below capital return	90%
Equity	\$37,923,986	Profit share when below Target IRR	50%
Debt payment (per year)	\$6,194,251	Profit share when above Target IRR	10%

Pro Forma

Years	0	1	2	3	4	5	6	7	8	9	10	11	12
Revenue	0	25,726,934	29,585,974	34,023,871	39,127,451	44,996,569	51,746,054	59,507,962	68,434,157	78,699,280	90,504,172	104,079,798	119,691,768
5% RoW+tax+fee	0%	1,286,347	1,479,299	1,701,194	1,956,373	2,249,828	2,587,303	2,975,398	3,421,708	3,934,964	4,525,209	5,203,990	5,984,588
Debt service	0	\$6,194,251	\$6,194,251	\$6,194,251	\$6,194,251	\$6,194,251	\$6,194,251	\$6,194,251	\$6,194,251	\$6,194,251	\$6,194,251	\$6,194,251	\$6,194,251
Investor share	0	9,659,794	11,861,365	14,393,171	8,483,283	6,845,663	7,273,503	7,765,519	8,331,338	8,982,029	9,730,324	10,590,863	11,580,483
Investor share (%)		90%	90%	90%	44%	30%	27%	24%	22%	20%	19%	18%	16%
Share / Orig Capital	0%	25%	31%	38%	22%	18%	19%	20%	22%	24%	26%	28%	31%
IRR to date	loss	(75%)	(30%)	(3%)	7%	12%	15%	18%	20%	22%	23%	24%	24%

Important Notices

The information contained in this document is not an offer to sell or a solicitation to buy any security. These materials and documents and information from which they are derived or which are referred to by or accessible from them may contain forward looking statements within the meaning of Section 27A of the Securities Act of 1933, Section 2E of the Securities Exchange Act of 1934 and the Private Securities Litigation Reform Act of 1995. All statements other than statements of historical fact are forward looking statements and are subject to risks and uncertainties. Forward looking statements generally can be identified by the use of forward looking terminology such as "may," "will," "expect," "intend," "estimate," "project," "anticipate," "believe" or "plan" or the negative thereof or variations thereon or similar terminology. Although Transit X believes that the expectations reflected in such forward looking statements are reasonable, it can give no assurance that such expectations will prove to be correct. All forward looking statements speak only as of the date made. Except as required by law, Transit X undertakes no obligation to update any forward looking statement to reflect events or circumstances after the date on which it is made or to reflect the occurrence of anticipated or unanticipated events or circumstances. These materials and documents and information from which they are derived or which are referred to by or accessible from them represent Transit X's best estimate as to the allocation of the funding proceeds based upon its present business plan and financial condition. The costs and expenses to be incurred in pursuing the Company's business plan cannot be predicted with certainty. There can be no assurance that unforeseen events will not occur or that the Company's business plan will be achieved or that it will not be changed, and it is possible that the funding proceeds may be applied in a manner other than that described herein.

Jobs Report*

This would create 600 new jobs in manufacturing, construction, and operations. About 200 existing transportation jobs would be impacted — of which 0 workers would need significant retraining. Improving the transportation infrastructure will boost the economy overall and lead to 200 new jobs. Lowering the cost of transportation and reducing travel times raises household income by 14%.

1	Annual median household income (US\$)	\$55,000	
2	CAPEX		
3	Average gross CAPEX salary (% of median HH)	125%	
4	Average gross CAPEX salary	\$68,750	
5	% of CAPEX as salary	15%	
6	Years of CAPEX	2	
7	# of CAPEX jobs	140	
8	% of jobs that are manufacturing vs. construction	75%	
9	Manufacturing jobs	110	
10	Construction jobs	40	
11	Supply chain jobs factor	3	
12	Jobs in supply chain	450	
13	Average gross OPEX salary (% of median HH)	115%	
14	Average gross OPEX salary	\$63,250	
15	% of OPEX as salary	30%	
16	Operations and Maintenance jobs	30	
17	Secondary-effect jobs factor	7%	
18	Secondary effect jobs	190	
19	<u>Job transitioning and training</u>		
20	Expected mode share at 10 years (from page 6, line 9)	81%	
21	% of population with a full-time job	60%	10,732
22	...jobs in transportation	10%	1,073
23	...jobs impacted with this proposed network	20%	215
24	...jobs requiring significant retraining	20%	43
25	Jobs needing retraining with this proposed network (over 10 years)	0.3%	30
26	Training cost per person as % of salary (from line 13)	100%	\$63,250
27	Number of years that training is divided across	10	
28	Ratio (as %) of training costs vs. gov't revenue from Transit X	5%	\$189,750

* Numbers are approximations based on a universal model. A regional study could analyze data based on local conditions.